

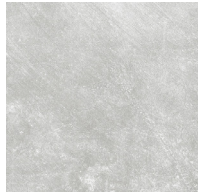
COLORS



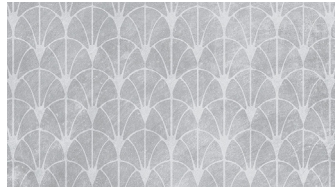
Ice



Ice Deco*



Ash



Ash Deco*



Seaweed



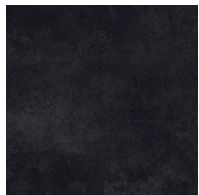
Seaweed Deco*



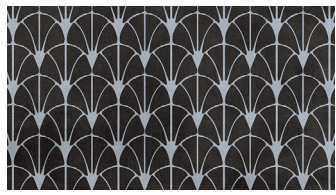
Sand



Sand Deco*

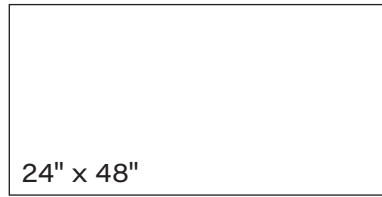


Coal

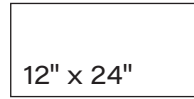


Coal Deco*

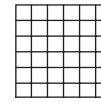
AVAILABLE SIZES



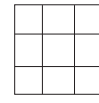
24" x 48"



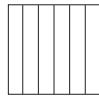
12" x 24"



2" x 2"
Mosaic



4" x 4"
Mosaic



2" x 12"
Mosaic

* Deco only available in 12" x 24" in Matte Finish

FINISH

MATTE RECTIFIED
TEXTURED RECTIFIED

THICKNESS

8 mm

TRIM

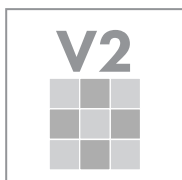
3" x 24" Bullnose
6" x 12" Cove Base

INSTALLATION & MAINTENANCE

Recommended Grout Size - 1/8"

For regular cleaning, use a neutral liquid detergent with a soft sponge or microfiber cloth. Persistent stains can be removed with a slightly abrasive sponge; if necessary, use a specially formulated stain remover.

TECHNICAL DATA



D.C.O.F.
WET
MATTE - TXT
≥ 0.45 - ≥ 0.65
BOT 3000

WATER
ABSORPTION
≤ 0.1%
ASTM C373

CHEMICAL
RESISTANCE
CLASS A
ASTM C650

FROST
RESISTANCE
NO DAMAGE
ASTM C1026

BREAKING
STRENGTH
≥ 400 lb.
ASTM C648

ABRASION
RESISTANCE
CLASS 4
ASTM C1027

